

ILED FM - 3615

Inverted LED Fluorescent Microscope



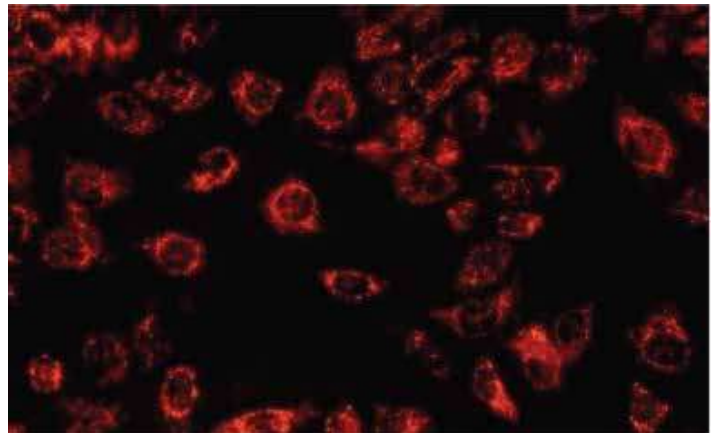
EPCC / PRODUCTS / APPLICATION / SOFTWARE / ACCESSORIES / CONSUMABLES / SERVICES

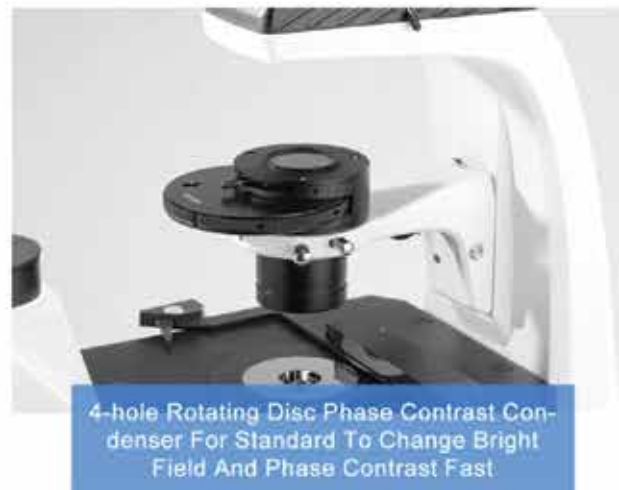
Analytical Technologies Limited

An ISO 9001 Certified Company

www.analyticalgroup.net

►► Introduction



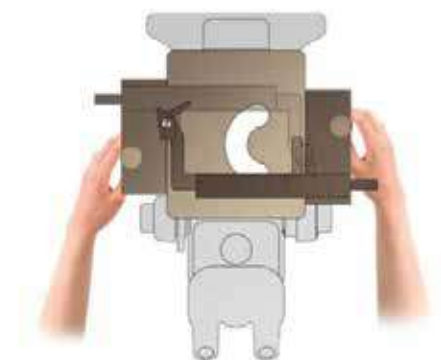
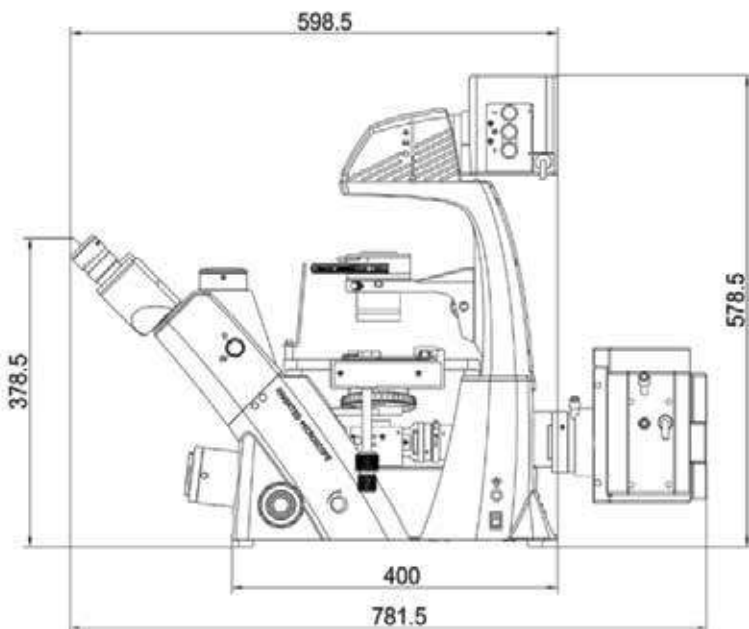




►► Wide Range Of application

Inverted fluorescence microscope is particularly suitable for living cells and tissues, fluids, sediments and other microscopic research. It is the ideal instrument for biology, cytology, oncology, genetics, immunology and other research work.

Inverted microscope is widely used in scientific research, universities, medical, epidemic prevention and agriculture and animal husbandry and other departments.



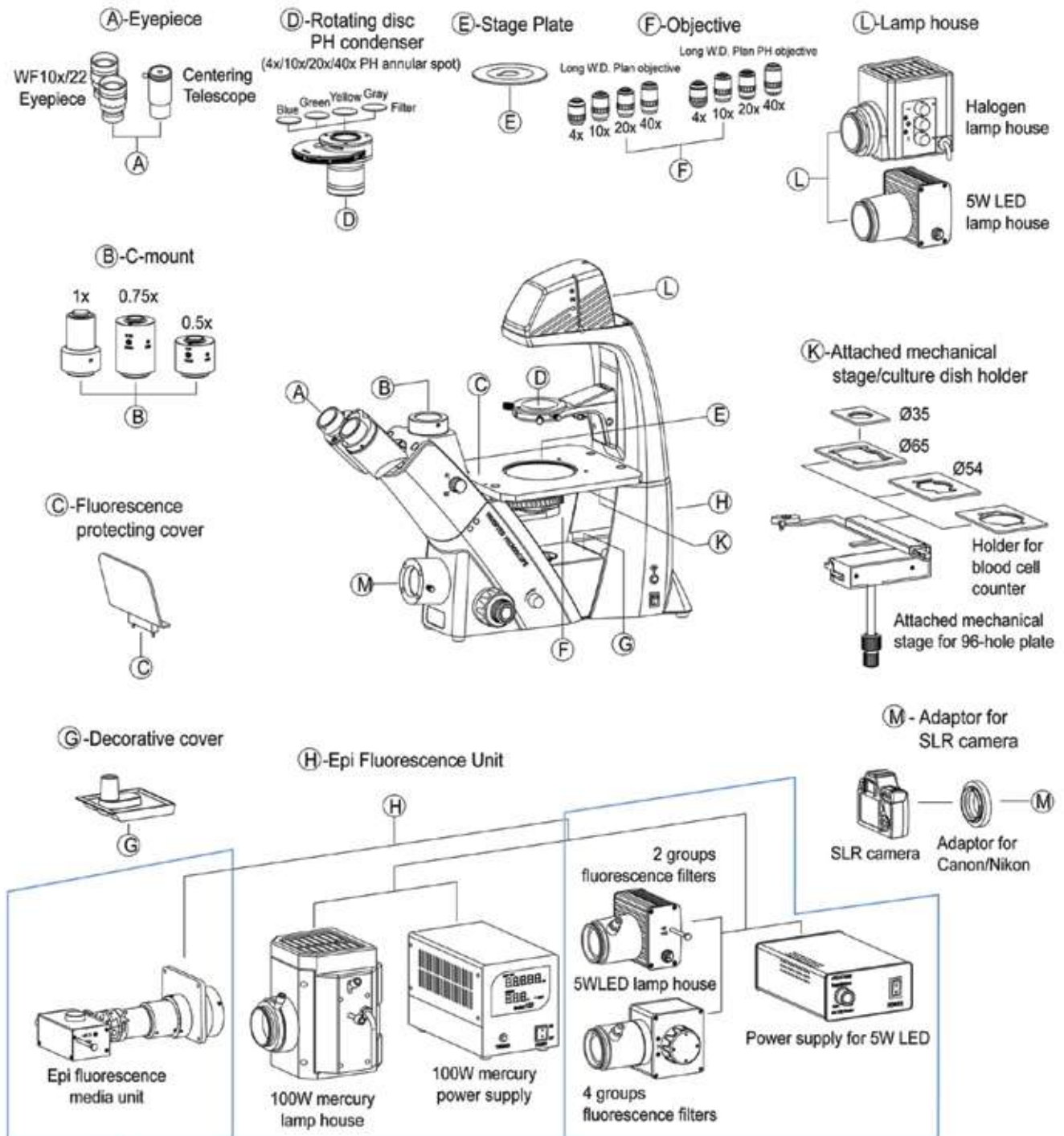
Mechanical Stage Size 210x241mm

Items	Inverted LED Fluorescent Microscope	-2	-4
Head	Seidentopf Trinocular Head Inclined 45°, Interpupillary Distance 48—76mm, Light split Switch E100:PO / E20:P80 Trino Port Design Support Eyepiece View / Digital Camera/SLR Camera Take Picture & Record Video At Same Time: --Eyepiece View Has 100% Or 20% Light Switchable --Digital Camera Port Has 0% Or 80% Light Switchable --Photography Port 100% Light For SLR Camera (Standard Outfit Including SLR Camera Adapter 1 pc)	●	●
Eyepiece	WF10x/22mm, Dia.30mm, High Eyepoint ,, Diopter Adjustable	●	●
	WF15x/22mm, Dia.30mm, High Eyepoint ,, Diopter Adjustable	○	○
	WF20x/22mm, Dia.30mm, High Eyepoint ,, Diopter Adjustable	○	○
Nosepiece	Quintuple	●	●
LWD Infinity Plan Objectives	LPL 4x/0.11, W.D=12.1mm	●	●
	LPL 10x/0.25, W.D=8.3mm	○	○
	LPL 20x/0.40, W.D=7.2mm	○	○
	LPL 40x/0.60, W.D=3.4mm	○	○
LWD Infinity Plan Phase Contrast Objectives	LPL Ph P 4x/0.10, W.D=9.2mm	○	○
	LPL Ph P 10x/0.25, W.D=8.3mm	●	●
	LPL Ph P 20x/0.40, W.D=7.2mm	●	●
	LPL Ph P 40x/0.60, W.D=3.4mm	●	●
Phase Contrast	4 Holes Rotating Disc Phase Contrast Condenser N.A.0.4, W.D 45mm, Up/Down Adjustable	●	●
	Centering Telescope 11x	●	●
	Annular Spot 4x	○	○
	Annular Spot 20x/40x	●	●
	Annular Spot 10x	●	●
Working Stage	Attached Mechanical Stage, Available for 96 Holes Plate, Moving Range 128x80mm	●	●
	Culture Dish Holder 65mm	○	○
	Culture Dish Holder 54mm	●	●
	Culture Dish Holder 35mm	○	○
	Holder For Blood Cell Counter	○	○
Illumination	Koehler illumination Halogen 12V/50W, Input Voltage 100V ~ 240V	●	●
	Koehler illumination 5W LED, Input Voltage 100V~240V	○	○
Power	ECO, Auto Power Off system. Power Off Automatically Upon User Leaving 10 Minutes, Power On Automatically Upon User Approaching Detected, This Function can be shut Down Manually	●	●
Filter	Blue, Dia.34mm	●	●
	Green, Dia.34mm	●	●
	Amber, Dia.34mm	○	○
	Grey, Dia.34mm	○	○

Adapter	SLR Digital Camera Adapter For Canon, 100% Light For Camera Port	●	●
	SLR Digital Camera Adapter For Canon, 100% Light For Camera Port	●	●
	SLR Digital Camera Adapter For Nikon, 100% Light For Camera Port		
	C-Mount 0.5x, Focus Adjustable	●	●
	C-Mount 0.75x, Focus Adjustable	○	○
	C-Mount 1.0x, Focus Adjustable	○	○
Fluorescence	B,G Fluorescent Filter, 5W LED Lamp House 5W LED Power Box Ultraviolet Protection Barrier Fluorescent Slide Unite 3 Holes, With Filter Diaphragm, center Adjustable 5W LED B,G Lamp Each 1 pc	●	○
	B,G Fluorescent Filter, 5W LED Lamp House 5W LED Power Box Ultraviolet Protection Barrier Fluorescent Slide Unite 3 Holes, With Filter Diaphragm, center Adjustable 5W LED B,G Lamp Each 1 pc	○	●
Package	Packing Size: 660mmx590mmx325mm Fluorescence carton Size 520x470x235mm		
Weight	Gross Weight: 18 kgs, Net Weight: 13.5 kgs		

Note : “●” In table is standard outfit, “○” is optional Accessories.

Inverted Biological Microscope General Layout Diagram



Epi Fluorescence Illumination With
 B,G,V,VU Or B,G Fluorescent Filter,
 100W Mercury Lamp House
 100W Mercury Power Box, Digital Disp.
 Fluorescent Slide 3 Holes
 Ultraviolet Protection Barrier
 China 100W Mercury Lamp



Inverted Biological Microscope Accessories



Mechanical Stage Size 210x241mm
Round Slide Size Φ 110mm

Culture Dish Holder 54mm

Culture Dish Holder 65mm
& Culture Dish Holder 35mm
(Optional)



WF10x/22mm

WF15x/16mm

WF20x/12mm

LWD Infinity Plan Objective: LPL10x/0.25
WD=8.3mm; LPL20x/0.40 WD=7.2mm; LPL40x/0.60 WD=3.4mm
LWD Infinity Plan
Phase Contrast Objective: 20x/0.40 WD=7.2mm



4 Holes Rotating Disc Phase Contrast Condenser
Centering Telescope 11x (Optional)
Annular Spot 4x (Optional)

ECO
Auto Power Off System
(Optional)



C-Mount 0.5x, C-Mount 0.75x
C-Mount 1.0x
Focus Adjustable

Filter: Blue, Green;
Amber, Grey (Optional)

►► **USB3.0 CMOS Cooled Digital Camera, Fluorescent Use**

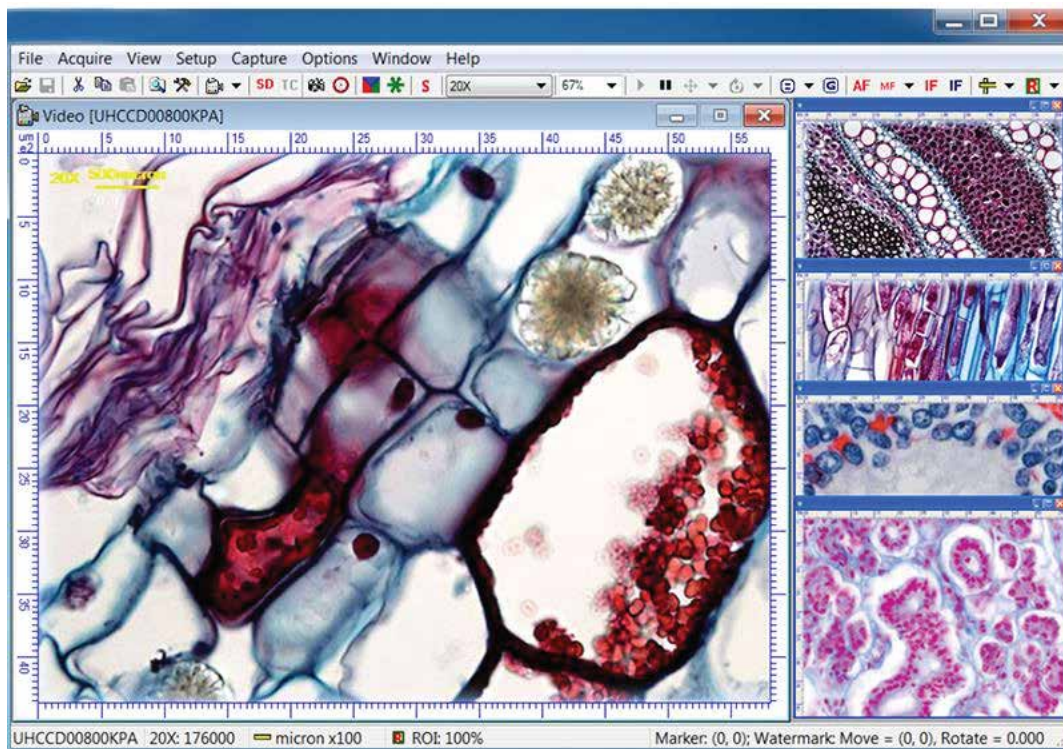
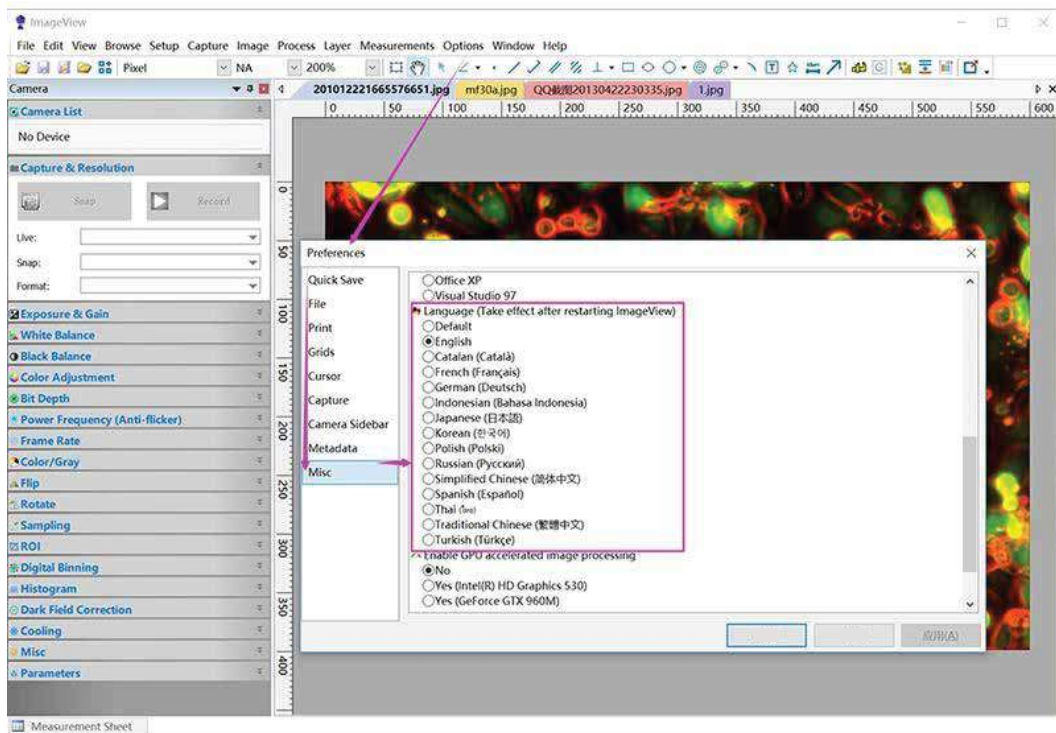
Product Size

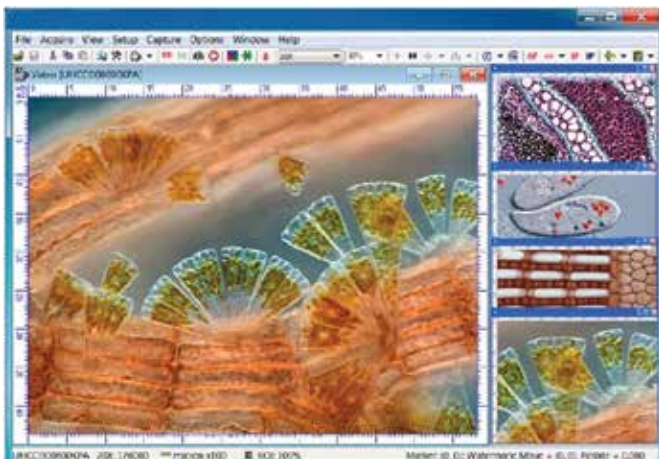
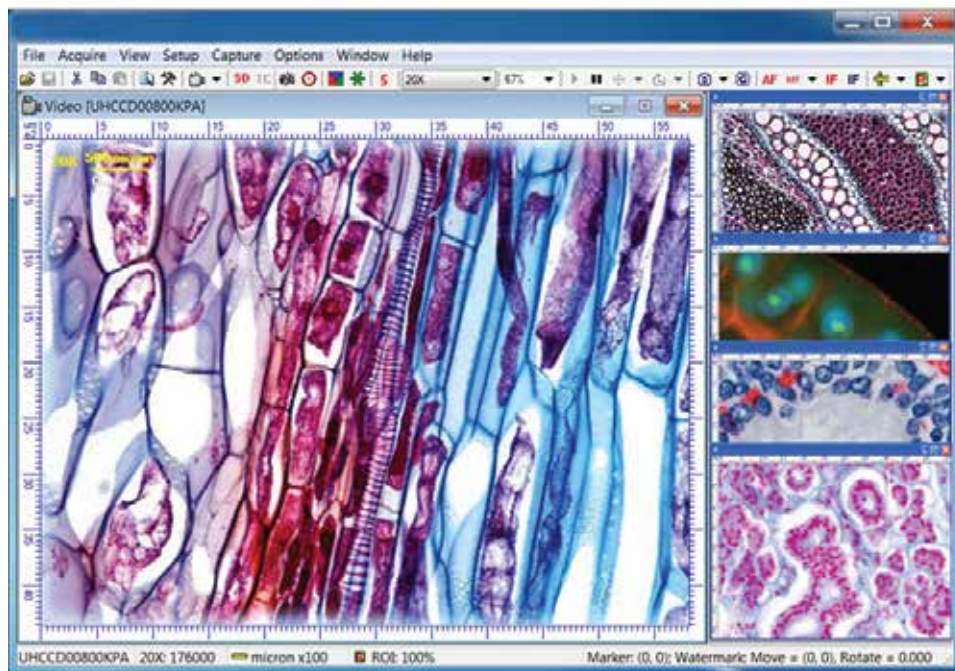


USB3.0 CMOS Cooled Digital Camera, Fluorescent Use

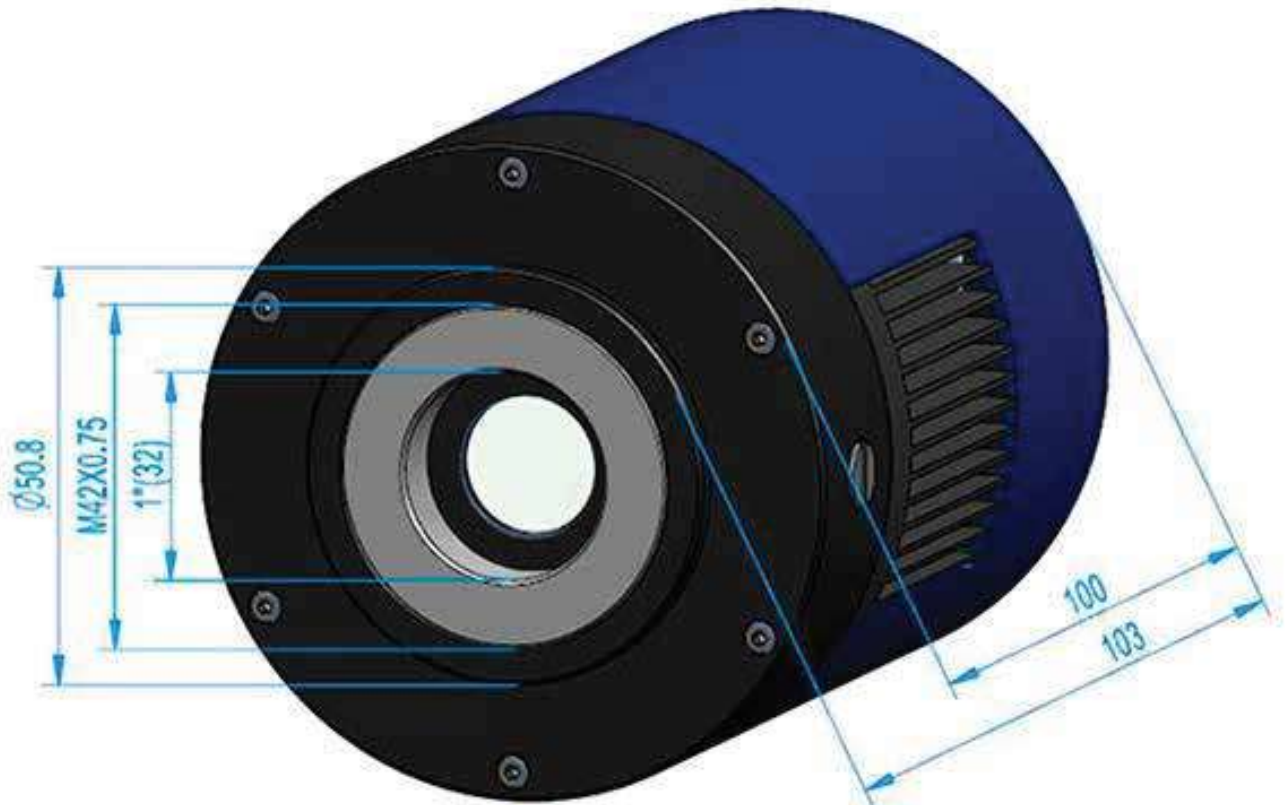


Product Software





Product Specification



Sensor & Size(mm)	Pixel(μm)	G Sensitivity	FPS/Resolution	Binning	Exposure
		Dark Signal			
20M/IMX183(C) 1"(13.06x8.76)	2.4x2.4	462mv with 1/30s 0.21mv with 1/30s	5@5440x3648	1x1, 2x2, 3x3	0.1ms~3600s
			10@4096x2160		
			15@2736x1824		
			30@1824 x1216		
20M/IMX183(M) 1"(13.06x8.76)	2.4x2.4	388mv with 1/30s 0.21mv with 1/30s	17.8@5440x3648	1x1, 2x2, 3x3	0.1ms~3600s
			41@4096x2160		
			51@2736x1824		
			64@1824 x1216		
16M/MN34230(C) 4/3“(17.60x13.30)	3.8x3.8	2413LSB 89.1LSB (Gain=0dB)	6@4648x3506	1x1, 2x2, 3x3	0.15ms~3600s
			20@2304x1750		
			48@1536x1168		
16M/MN34230(M) 4/3“(17.60x13.30)	3.8x3.85	2560LSB 89.1 LSB (Gain=0dB)	22.5@4648x3506	1x1, 2x2, 3x3	0.15ms~3600s
			43@2304x1750		
			48@1536x1168		
10.3M/IMX294(C) 4/3"(17.47x12.86)	4.63x4.63	419mv with 1/30s 0.12mv with 1/30s	7.5@3704x2778	1x1, 2x2, 3x3	0.15ms~3600s
			8.5@4096x2160		
			30@2048x1080		
			60@1360x720		
OTHER HARDWARE CONFIGURATION					
Spectral Range		380-650nm (with IR-filter), for Monochromatic Camera, AR Is Used			
White Balance		ROI White Balance/ Manual Temp-Tint Adjustment			
Color Rendering Technique		Ultra Fine Color Engine			
Capture/Control API		Native C/C++, C#, Directshow, Twain, Labview			
Recording System		Still Picture and Movie			
Cooling System*		Two-stage TE-cooling System -45 °C below Camera Body Temperature			
OPERATING ENVIRONMENT					
Operating Temperature		-10°C~ 50°C			
Storage Temperature		-20°C~ 60°C			
Operating Humidity		30~80%RH			
Storage Humidity		10~60%RH			
Power Supply		DC 5V over PC USB Port			
		External Power Adapter for Cooling System, DC12V,3A			
SOFTWARE ENVIRONMENT					
Operating System		Support Microsoft Windows XP / Vista / 7 / 8 /10(32 & 64 bit)			
		OS X (Mac OS X), Linux			
PC Requirements		CPU: Equal to Intel Core2 2.8GHz or Higher			
		Memory: 2GB or More			
		USB port: USB2.0 High-speed Port			
		Display: 17"or Larger			
		CD-ROM			

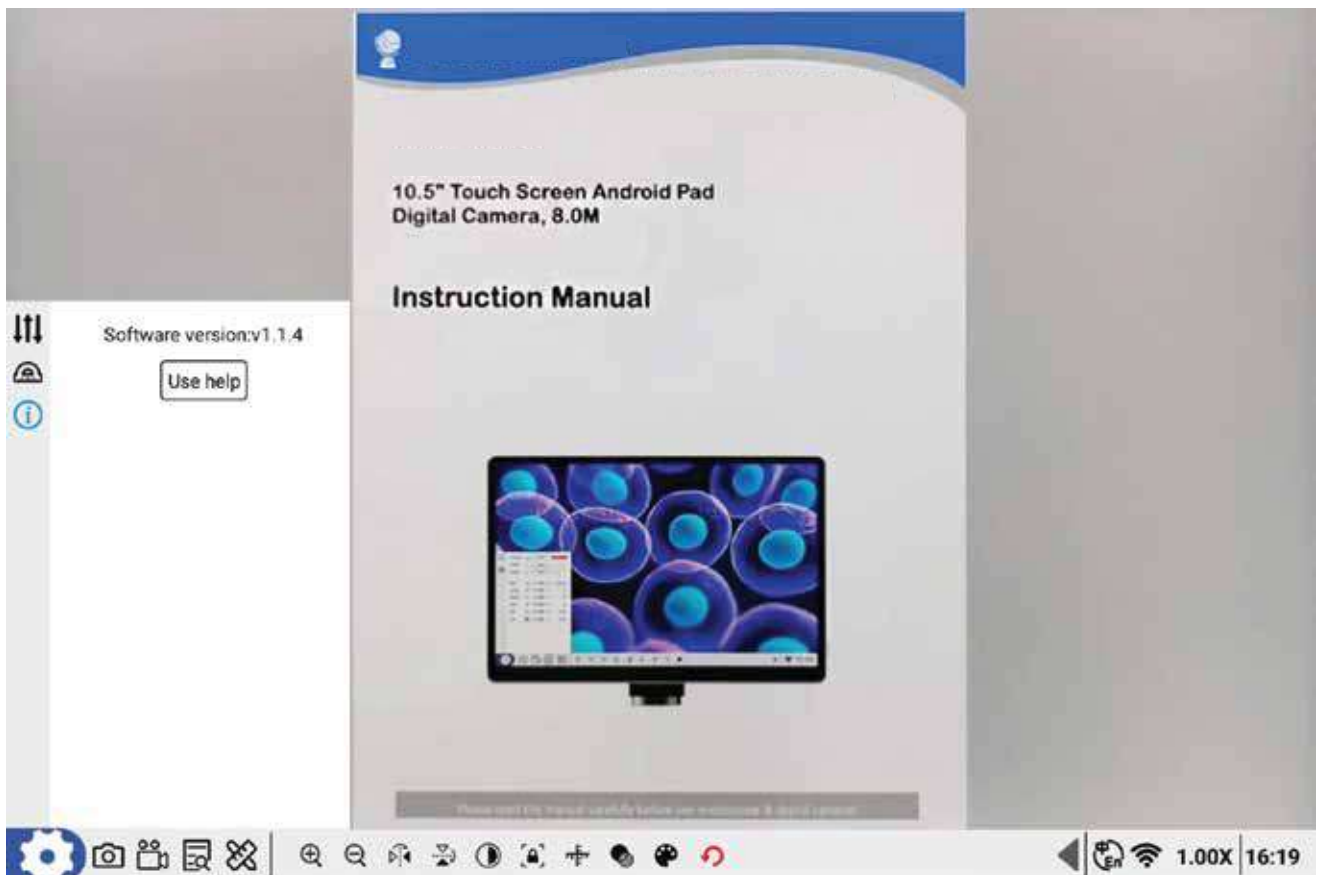
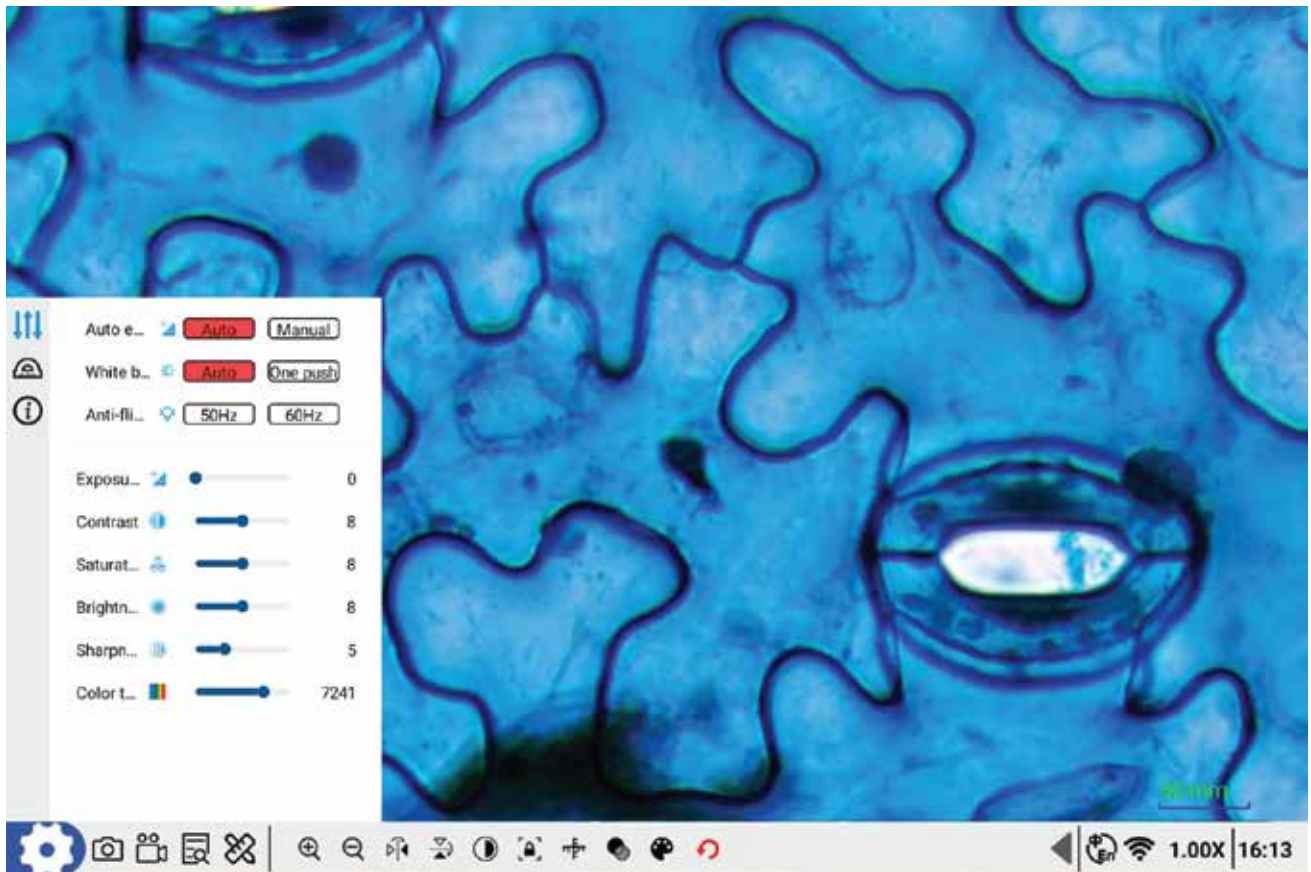
►► **10.5" Touch Screen Android Pad
Digital Camera, 8.0M**

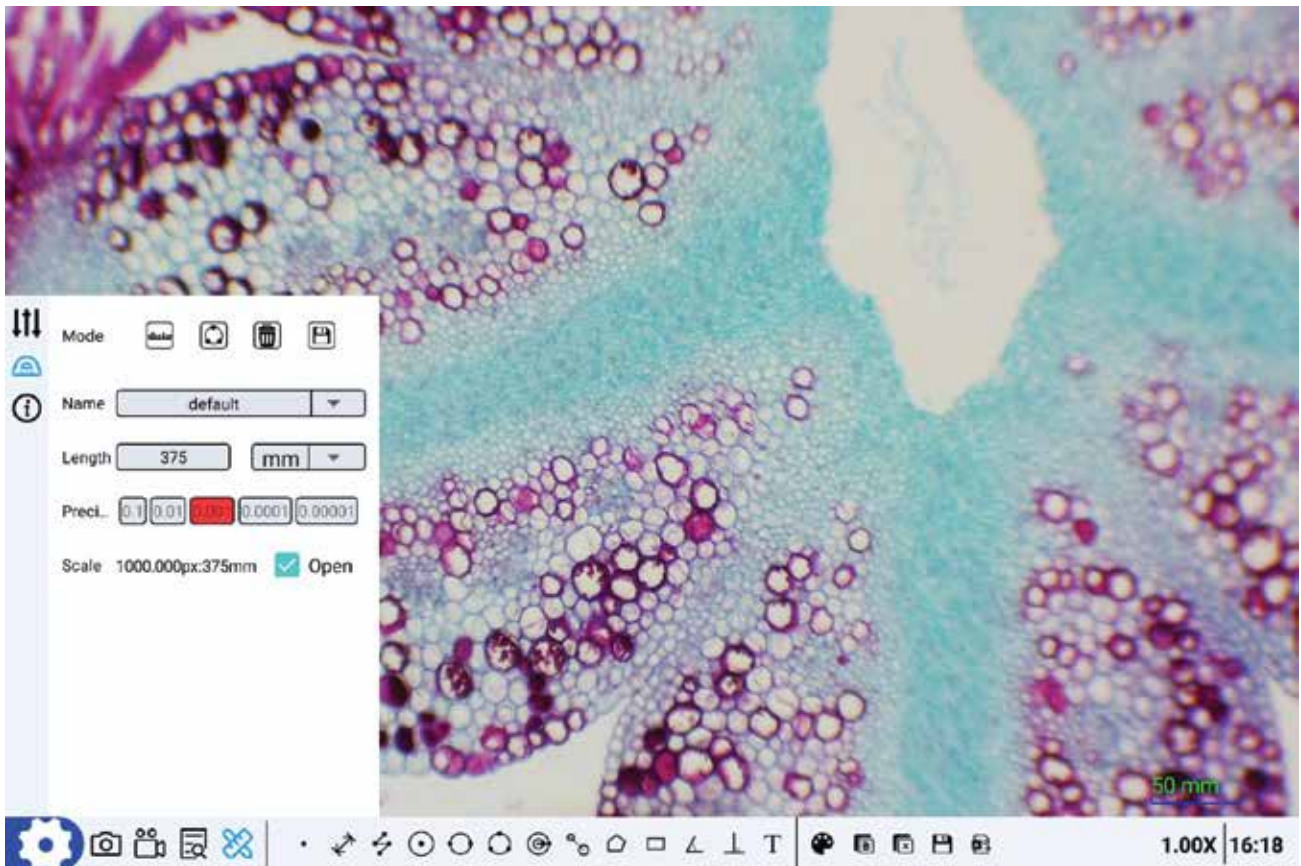


►► **Specification**

- 10.5" Touch Screen Android Pad + 4K Digital Camera, All-in-One
- 8.0M 1/1.8" CMOS Digital Camera Resolution 3840*2158@30FPS
- Android 11 Tablet Built-in Memory RAM 2G + ROM 16G For Photo & Video Record
- USB3.0+HDMI+LAN Output, Touch Screen + USB Mouse & Keyboard Control
- Open & See Microscope Image Directly, Built-in Software For Measure & Analysis









	ILEDFM 3615	Upgrade 2022!
LCD	9.7" HD IPS Touch Screen With Backlight	10.5" HD IPS Touch Screen With Backlight
Camera	5.0M Digital Camera	8.0M 4K Digital Camera
Sensor	1/2.5" CMOS	1/1.8" CMOS
Resolution	2048x1536 @15FPS	3840*2158 @30FPS
Pixel	2.2umx2.2um	2.0umx2.0um
Memory	2GB DDR3 / 8GB EMMC	2GB LPDDR4 / 16GB EMMC
Digital Zoom	-	16x
Data Output	USB2.0*1, For USB Mouse + Keyboard Control	USB2.0*1, For USB Mouse + Keyboard Control
	USB2.0*1, For USB Disk	USB3.0*2, For USB Disk, Support Max 128G
	Mini HDMI*1 Sync Output to Monitor	HDMI*1 Sync Output to Monitor
	-	LAN*1
	TF Card, Support Max 32G	-
	Headphone 3.5mm	-
Image Format	.jpg	.jpg
Video Format	1080p	1080p
System	Android 5.1 System	Android 11 System
	90 Languages	90 Languages
	Exposure Control Auto/Manual	Exposure Control Auto/Manual
	White Balance Auto/Manual	White Balance Auto/Manual
	Support WIFI	Support WIFI
	Support Bluetooth	Support Bluetooth
Software Function	S-Eye Software & Instruction Manual Installed, All Kinds Mark, Measure, Analysis Function	S-Eye Software & Instruction Manual Installed, All Kinds Mark, Measure, Analysis Function Direct Enter Microscope View
Size	Pad 238x182x12mm, Camera 40x39mm	Pad 237x169x10.5mm, Camera 40x39mm
Power	DC 12V/2A Power Adaptor, AC 100~240V	
Package	Packing Box 10x24x29cm, 0.6Kg, 1 set/Box, Including: LCD Camera, AC Adapter	



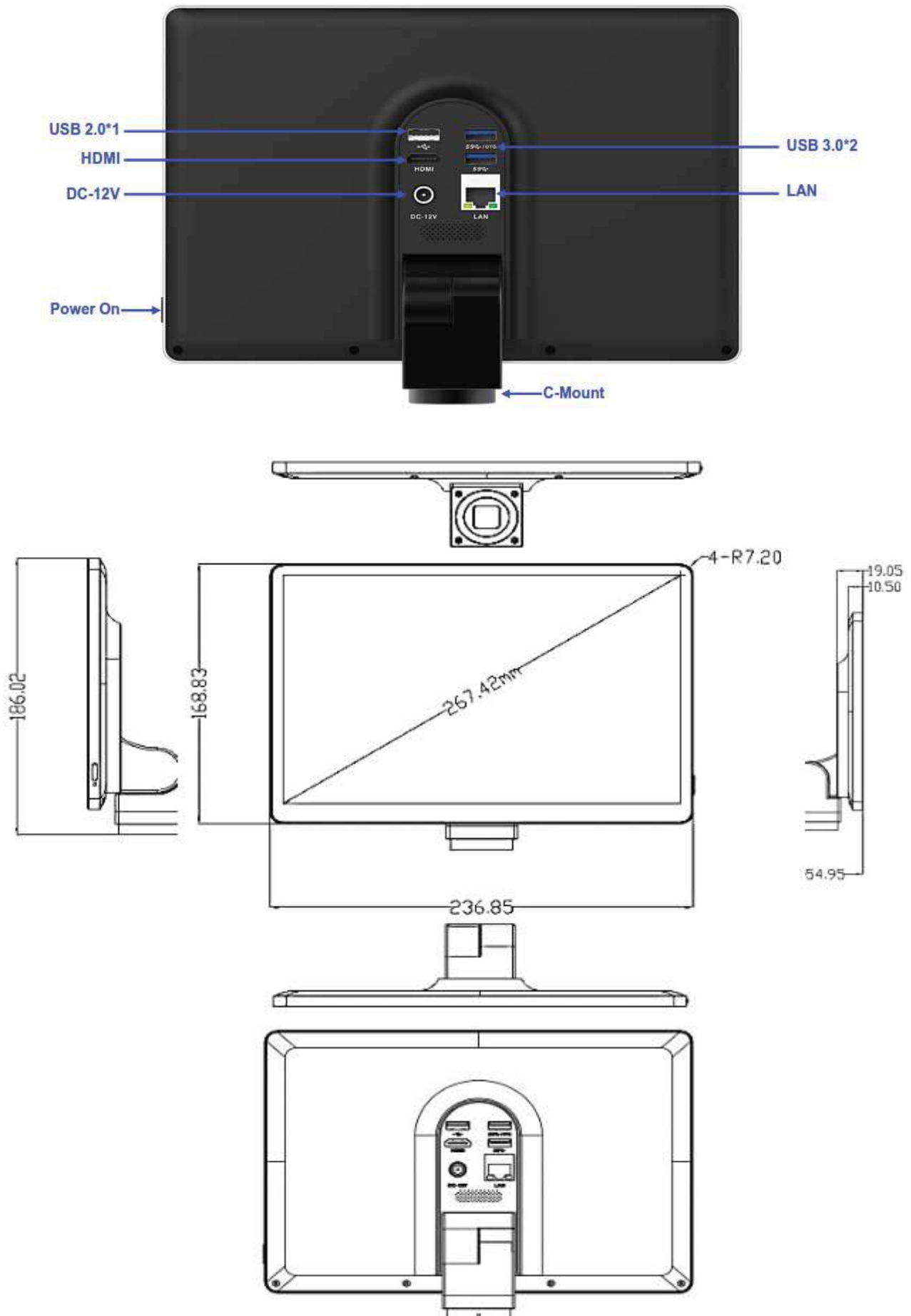
►► Specification



Touch Screen Android Pad Digital Camera, 8.0M

Spec.		
	Category	HD All-in-One Android 11 System Tablet Digital Camera
	Sensor	1/1.8" CMOS Sensor
	Effective Pixel	8M, 4K
	Screen	10.5" High-Definition Touch Screen
	Operation System	Android 11
	WIFI	2.4GHz/5GHz Dual-band WIFI, Support WIFI6
	Bluetooth	Bluetooth 5.0
	Output	USB3.0*2, USB2.0*1, HDMI, Gigabit LAN Port
	Pixel size	2.0um*2.0um
	Power	DC-12V/2A
Function	Basic Function	Android Interaction, Installed S-Eye2.0 Measure Software
	Image Adjustment	Brightness, Contrast, Saturation, Color Temperature
	Camera Function	Mirror, Flip, Freeze, Black and White
	UI Interface	Support User-friendly Mouse & Keyboard, And Touch Screen Operation
	Photo	8.0M Image Capture
	Video	1080P Video
	Storage	Still Photo And Video Recording, Picture Preview
	Marking	Point Coordinates, Crosshairs, Coordinate System, Text Annotations
	Length Measurement	Straight Line, Folded Line, Curve Length, Parallel Line Distance, Point Line Distance
	Geometric Measurement	Line Segment Length, Radius Fixed Circle, 2 Point Fixed Circle, 3Point Fixed Circle, Concentric Circle, Radius Fixed Circle
Package	Geometric Area Measurement	Polygon, Rectangle
	Measurement System	Built-in S-Eye Software
	Box Size	237*169*10.5mm
	Weight	0.6kg
	Accessory	DC-12V/2A Power Adapter

►► Output, Size & Diaphragm



HPLC Servicing, Validation, Trainings and Preventive Maintenance :

HPLC Servicing :HPLC Servicing : We have team of service engineers who can attend to any make of HPLC promptly @the most affordable cost.

Trainings :We also take up preventive Maintenance to reduce downtime of HPLC's Trainings.

AMC's/CMC :AMC's/CMC :We offer user training both in-House and at customer sites on HPLC principles, operations, trouble-shooting.

Validations :Validations :We have protocols for carrying out periodic Validations as per GLP/GMP/USFDA norms.

Instruments :Instruments :We offer instruments/Renting Services Modules like pumps,detector etc. on Rent.



About Analytical Technologies

Analytical Technologies is synonymous for offering technologies for doing analysis and is the Fastest Growing Global Brand having presence in at least 96 countries across the global. Analytical Technologies Limited is an ISO:9001 Certified Company engaged in Designing, Manufacturing, Marketing & providing Services for the Analytical, Chromatography, Spectroscopy, Bio Technology, Bio Medical, Clinical Diagnostics, Material Science & General Laboratory Instrumentation. Analytical Technologies, India has across the Country operations with at least 4 Regional Offices, 6 Branch Offices & Service Centers. Distributors & Channel partners worldwide.

Our Products & Technologies



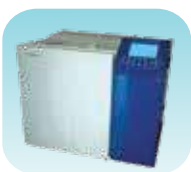
UV/VIS
Spectro 2080+
Double Beam



Infra FTIR



Optima Gas
Chromatograph
3007



Optima Gas
Chromatograph
2979 Plus



Flash
Chromatograph



Atomic Absorption
Spectrophotometer



Liquid Particle
Counter



Optical Emission
Spectrophotometer



DSC/TGA



Semi Auto Bio
Chemistry Analyzer



HEMA 2062
Hematology
Analyzer



Micro Plate
Reader/Washer



URINOVA 2800
Urine Analyzer



Total Organic
Carbon 3800



Fully Automated
CLIA



NOVA-2100
Chemistry Analyzer



PCR/Gradient PCR/
RTPCR



TOC
Analyzer



Laser Particle
Size Analyzer



Ion Chromatograph



Water purification
system

Regulatory compliances



Corporate Social Responsibility

Analytical Foundation is a nonprofit organization (NGO) found for the purpose of:



Analytical Foundation

1. Research & Innovation Scientist's awards/QC Professional Award : Quality life is possible by innovation only and the innovation is possible by research only, hence ANALYTICAL FOUNDATION is committed to identify such personalities for their contributions across various field of Science and Technology and awarding them yearly. To participate for award, send us your details of research / testing / publication at Info@analyticalfoundation.org

2. Improving quality of life by offering YOGA Training courses, Work shops/Seminars etc.

3. ANALYTICAL FOUNDATION aims to DETOXYFY human minds,souls and body by means of yoga, Meditation, Ayurveda, Health Care, Awards, Media, Events, Camps etc.



HPLC Solutions MultipleLabs Analytical Bio-Med Analytical Distributors Analytical Foundation (Trust)

Corporate & Regd. Office:
Analytical House, # E67 & E68,
Ravi Park, Vasna Road, Baroda,
Gujarat 390 015. INDIA

T: +91 265 2253620
+91 265 2252839
+91 265 2252370
F: +91 265 2254395

E: info@hplctechnologies.com
info@multiplelabs.com
info@analyticalgroup.net

W. www.analyticalgroup.net
www.hplctechnologies.com
www.multiplelabs.com

Sales & Support Offices:
across the country :
Distributors & Channel
partners World Wide